

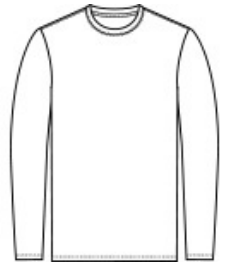


Our value-priced polyester tee performs with Dry Zone® moisture-wicking technology to keep you cool, dry and comfortable.

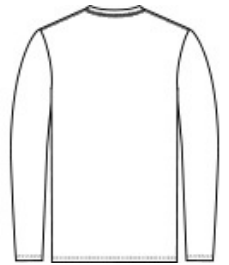
- 3.8-ounce, 100% polyester
- Tag-free label
- Hemmed cuffs
- *Due to the nature of 100% polyester performance fabrics, special care must be taken throughout the printing process.*

**CARE INSTRUCTIONS**

Machine wash cold, inside out with like colors. Only non-chlorine bleach when needed. Tumble dry low. Do not iron. Do not use fabric softener.



front



back

**HOW TO MEASURE**












**CHEST WIDTH**  
Measure under the arm and around the fullest part of the chest with arms down, keeping tape horizontal.

**SIZE CHART**

	S	M	L	XL	2XL	3XL	4XL
Chest	35-37	38-40	41-43	44-46	47-49	50-53	54-57

**COLOR INFORMATION**

								
Carolina Blue	Charcoal PMS COOL GRAY PMS 532C 11C	Deep Navy	Grey Concrete	Jet Black PMS NTR BLACK PMS 200C C	Red PMS 200C	Royal PMS 2133C	Silver PMS 435C	White