



With a subtle striated pattern, this sleek soft shell hits the mark for corporate sophistication. It keeps water and wind at bay with a water-resistant film insert and a DWR finish.

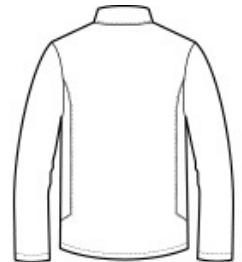
- 100% polyester knit shell with DWR finish bonded to a water-resistant film insert and a 100% polyester microfleece lining
- 1000MM fabric waterproof rating
- 1000G/M2 fabric breathability rating
- Full-length exterior storm flap
- Reverse-coil zippers
- Zippered chest pocket
- Covered front zippered pockets
- Open hem with adjustable locking drawcord

CARE INSTRUCTIONS

Machine wash cold with like colors. Do not use fabric softener. Do not bleach. Tumble dry low. Cool iron, if necessary. Do not dry clean.



front



back

HOW TO MEASURE



CHEST WIDTH
Measure under the arm and around the fullest part of the chest with arms down, keeping tape horizontal.

SIZE CHART

| | XS | S | M | L | XL | 2XL | 3XL | 4XL |
|-------|-------|-------|-------|-------|-------|-------|-------|-------|
| Chest | 32-34 | 35-37 | 38-40 | 41-43 | 44-46 | 47-49 | 50-53 | 54-57 |

COLOR INFORMATION



Dress Blue Navy
Heather
PMS 533C

Graphite
Heather
PMS 7540C