



District Made® Ladies Drapey Dolman Tee. DM412



Designed with a relaxed fit, this dolman tee will be a favorite.

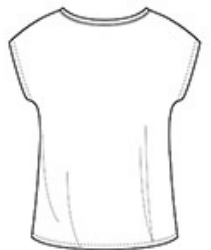
- 3.9-ounce, 70/30 poly/rayon, 40 singles
- Dropped back hem

CARE INSTRUCTIONS

Machine wash cold. Tumble dry low remove promptly. Do not bleach. Do not dry clean. Cool iron if needed.



front



back

HOW TO MEASURE



BUST

With arms down at sides, measure around the upper body, under arms and around the fullest part of the bust.

SIZE CHART

	XS	S	M	L	XL	XXL	3XL	4XL
Size	2	4/6	8/10	12/14	16/18	20/22	24/26	28/30
Bust	32-34	35-36	37-38	39-41	42-44	45-47	48-51	52-55

COLOR INFORMATION

Black PMS NTR BLACK	Charcoal PMS 7540C	Deep Royal PMS 7687C	New Navy PMS 533C	Pink Azalea PMS 215C