

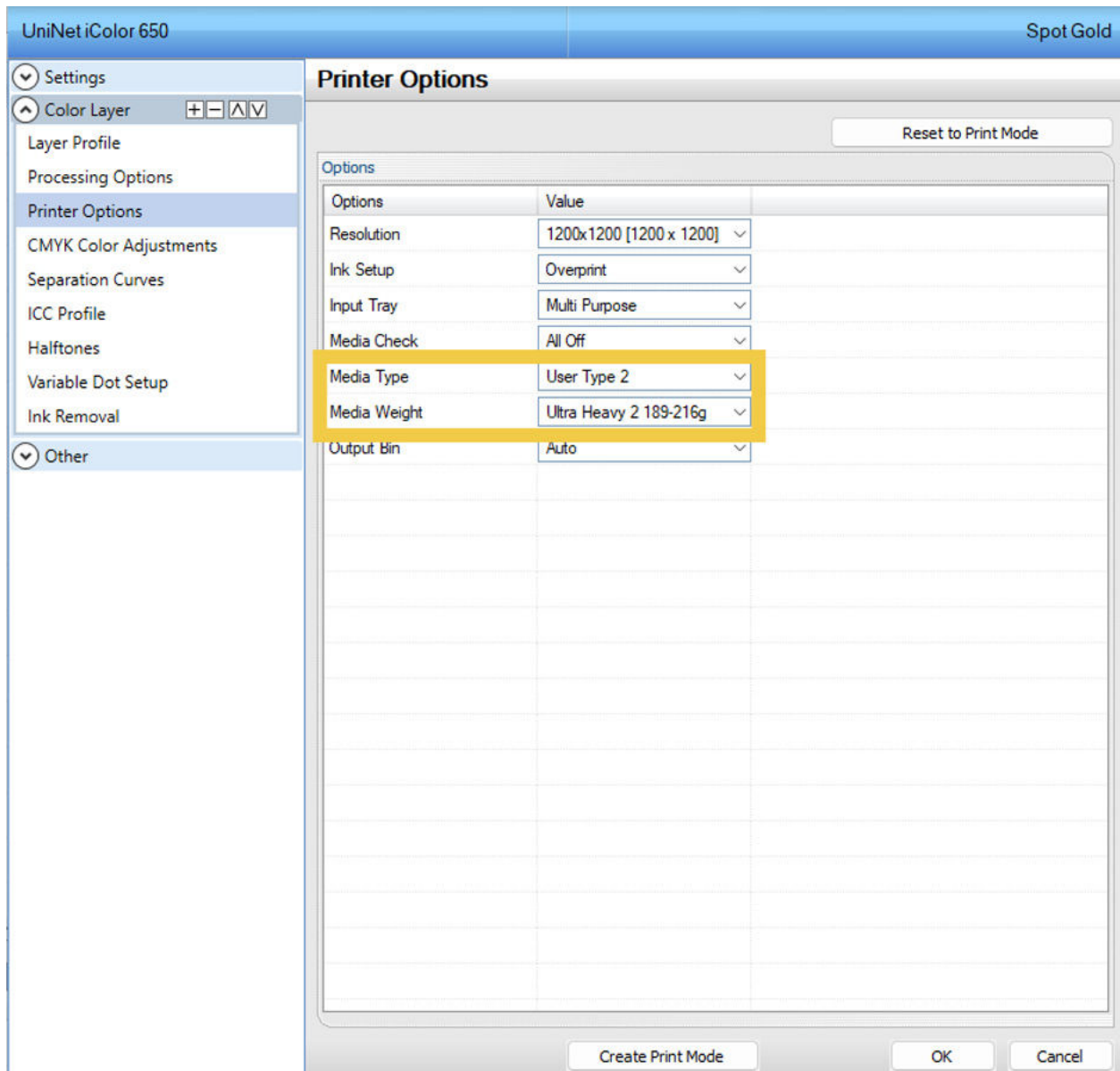


TRANSFER INSTRUCTIONS

Need More Paper?
Call Toll-Free 800-891-1094 or go to colmanandcompany.com to re-order.

I650 Print Optimizer Settings:

- 1) Open your graphic in the **UNDERPRINT** tab
- 2) Under **Printer Options**, Set Media Type to **User Type 2** and Media Weight to **Ultra Heavy 2**



I650 Print Optimizer Settings:

- 1) Open your graphic in the **UNDERPRINT** tab
- 2) Under **Printer Options**, set Paper Type to **Labels**

The screenshot shows the UniNet iColor 560 software interface. The top bar displays "UniNet iColor 560" on the left and "Transparency Media - Underprint" on the right. A left-hand menu is visible with categories: Settings, Color Layer (expanded), and Other. Under "Color Layer", the following options are listed: Layer Profile, Processing Options, Printer Options (highlighted), CMYK Color Adjustments, Separation Curves, ICC Profile, Halftones, Variable Dot Setup, and Ink Removal. The main window is titled "Printer Options" and contains a "Reset to Print Mode" button. Below this is a table with the following data:

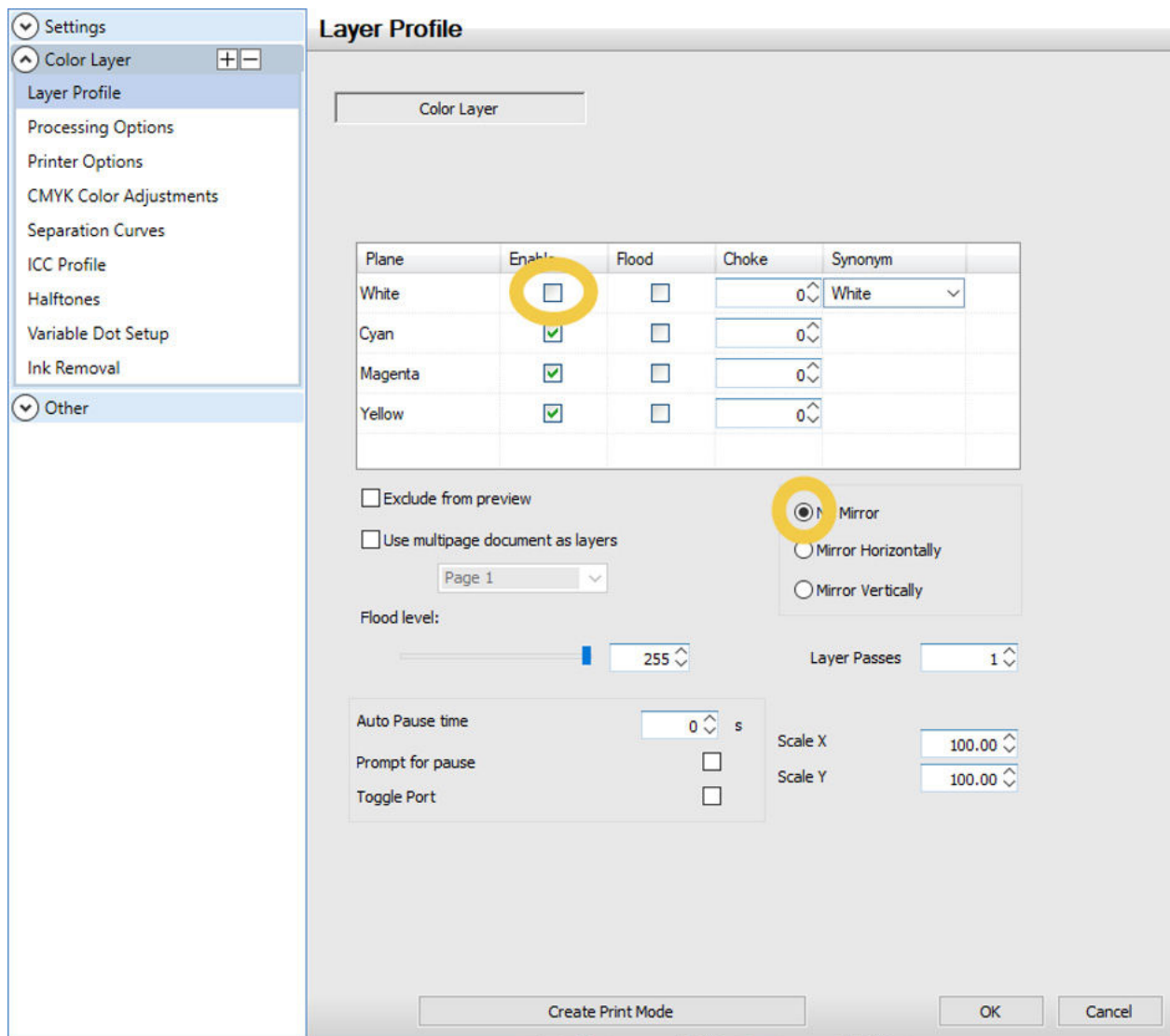
Options	Value
Resolution	600dpi [600 x 600]
Ink Setup	Underprint
Dithering	Automatic
Input Tray	ByPass Tray
Output Quality	Standard
Paper Type	Labels

At the bottom of the dialog, there are three buttons: "Create Print Mode", "OK", and "Cancel".

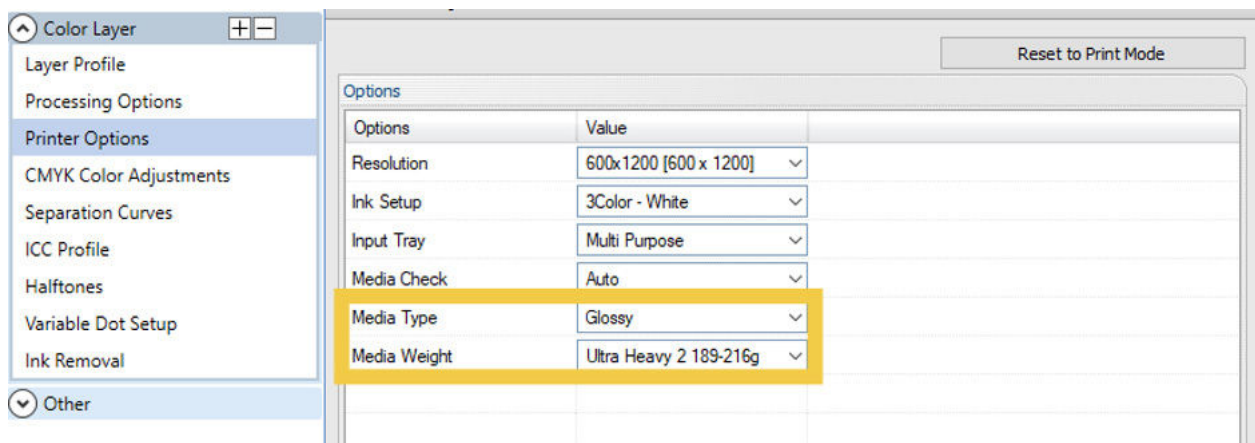
8432 and 9541 Print Optimizer settings:

1) Under **Layer Profile** – Remove the checkmark next to **“White”** to turn white toner off and check **“no mirror”**.

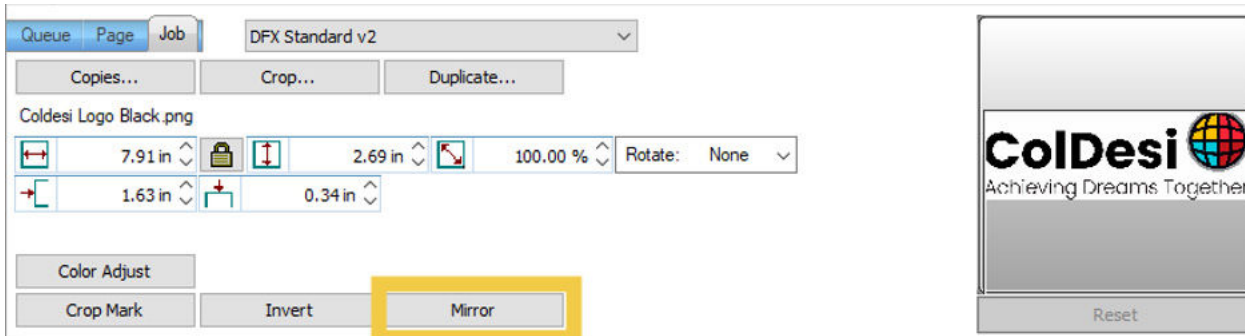
Please note – if you are working under a queue that is programmed to mirror designs when importing, this radio button will NOT override it, it will need to be unchecked on the main screen (see below).



2) Under **Printer Options** – Set Media Type to **Glossy** and Media Weight to **Ultra Heavy 2**



3) Per step number 1, double check the bottom right-hand corner of your screen to make sure the **mirror function is disabled**.



1650, i560, 8432, and 9541 steps are the same from here down:

4) Install paper in the **multi-purpose tray** and **print**

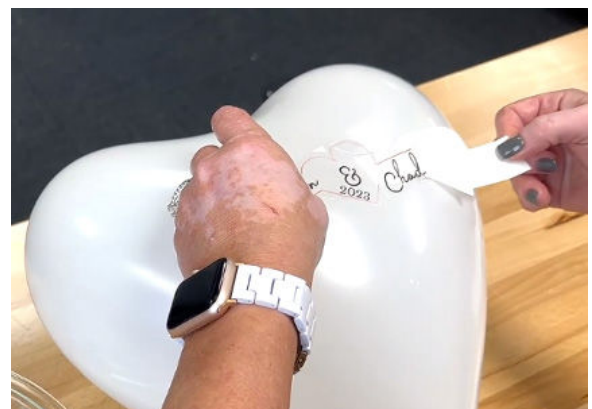
5) Use scissors to cut out your design leaving 2-3mm of spacing around the edges



6) Fill your bowl with room temperature water and **submerge the pre-cut decal for 30-60 seconds** or until the middle of the decal can easily be moved around.



7) Remove from water and quickly apply to your clean decal surface, **backing side down** and gently slide backing off. Press firmly using your fingers, a damp cloth/paper towel, or mini squeegee to remove any air bubbles. Gently pad off any excess water.



8) Let the decal set to dry for at least 3 hours out of direct sunlight. Ceramics can be baked in an oven at 230 degrees Fahrenheit for 10-15 minutes to speed up curing, or the decal will cure naturally when left to dry about 24-48 hours.



Additional Information:

- Waterslide decals are not dishwasher safe – gently hand wash
- Once cured, it can be difficult to remove waterslide decals. For a natural removal solution, try soaking in hot water or vinegar and scrape while soaking. You can also use a product like Goo Gone to remove the decal.
- Laser waterslide decals do not require being sealed, however, if you desire to seal them, allow 48 hours to cure before sealing. Sealing recommendations are as follows:
 - » If the decals are for more decorative use like glass blocks, you can seal them with two coats of clear acrylic spray - Rustoleum 2X Clear has been tested, but any clear acrylic spray should work. Mod Podge can also be used for a dishwasher safe version. Setting times vary, so follow manufacturer's instructions.
 - » For sealing decals on tumblers, you can epoxy or use a non-epoxy sealant called Crystalac.
 - » Please note, most of these sealants contain harmful chemicals and require proper safety equipment. Please refer to the manufacturer's safety instructions when handling.
- Not safe for skin – please use temporary tattoo paper for this application
- Not recommended for firing on porcelain, china, or ceramics. Cure temperature should be under 390 Fahrenheit.

For additional support, please contact support@coldesi.com or open a ticket at <https://support.coldesi.com/open-a-ticket/>.