



TRANSFER INSTRUCTIONS

Need More Paper?
Call Toll-Free 800-891-1094 or go to colmanandcompany.com to re-order.

Print Optimizer settings:

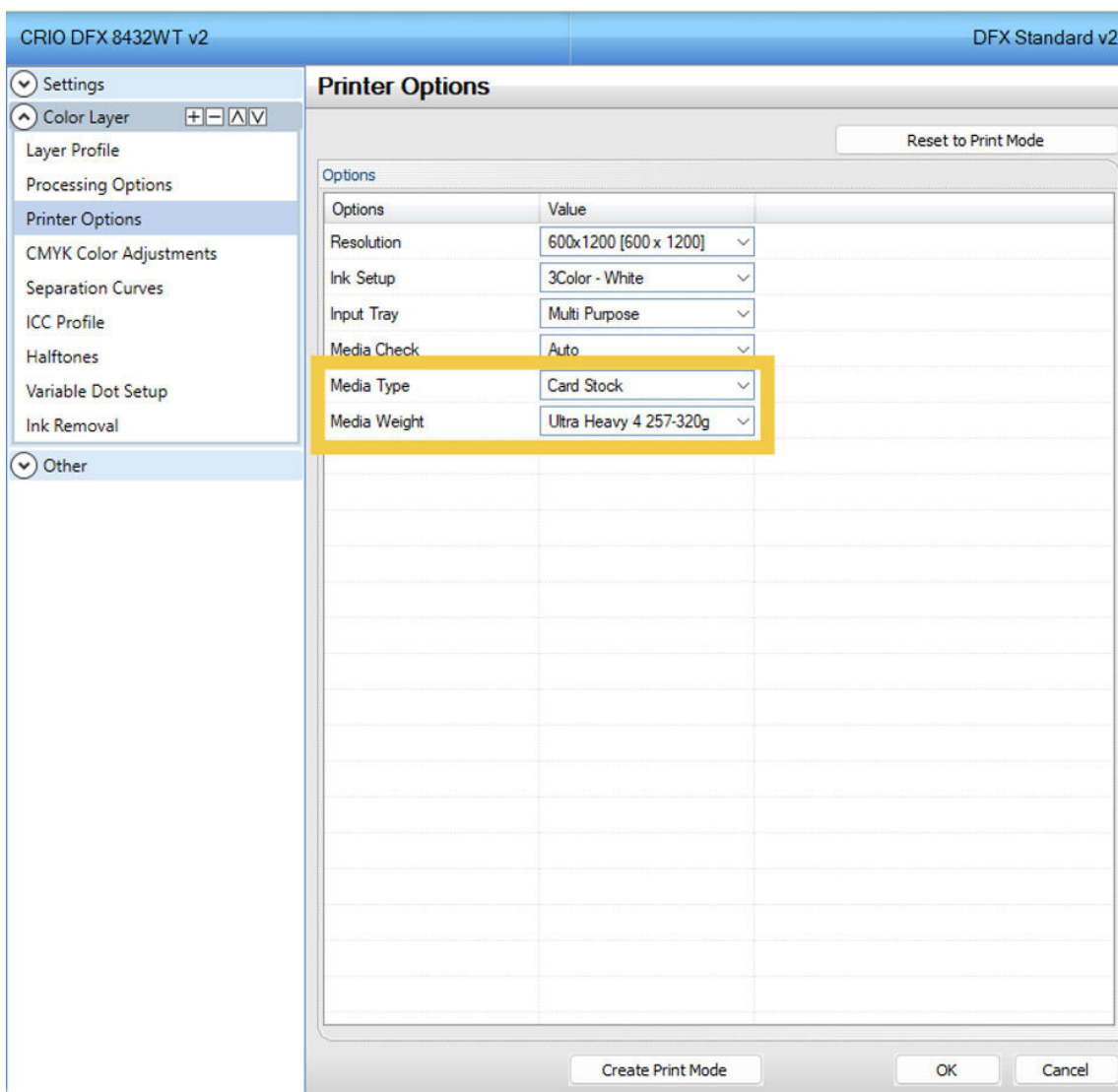
1) **Under Layer Profile** - Remove the checkmark next to white to turn white toner off and check **“no mirror”**.

Please note - if you are working under a queue that is programmed to mirror designs when importing, this radio button will NOT override it, it will need to be unchecked on the main screen (see below).

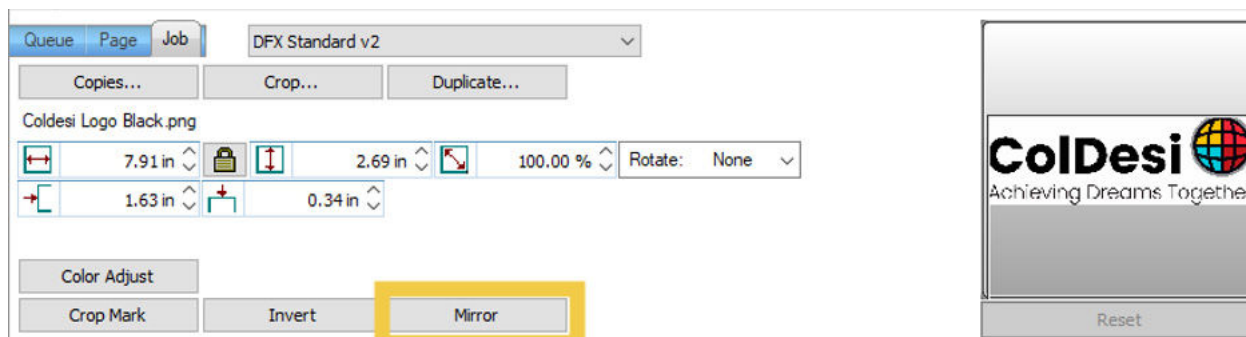
The screenshot shows the 'Layer Profile' settings dialog box. On the left is a sidebar with a tree view containing 'Settings', 'Color Layer', 'Layer Profile', 'Processing Options', 'Printer Options', 'CMYK Color Adjustments', 'Separation Curves', 'ICC Profile', 'Halftones', 'Variable Dot Setup', 'Ink Removal', and 'Other'. The 'Color Layer' section is expanded, and 'Layer Profile' is selected. The main area is titled 'Layer Profile' and contains a 'Color Layer' label. Below it is a table with columns: Plane, Enable, Flood, Choke, and Synonym. The 'White' row has an unchecked 'Enable' checkbox, while Cyan, Magenta, and Yellow have checked ones. Below the table are several options: 'Exclude from preview' (unchecked), 'Use multipage document as layers' (unchecked), 'Page 1' dropdown, 'Flood level' slider set to 255, 'Layer Passes' set to 1, 'Auto Pause time' set to 0 s, 'Prompt for pause' (unchecked), 'Toggle Port' (unchecked), 'Scale X' set to 100.00, and 'Scale Y' set to 100.00. On the right side, there are radio buttons for 'Mirror', 'Mirror Horizontally', and 'Mirror Vertically', with 'Mirror' being selected. At the bottom are 'Create Print Mode', 'OK', and 'Cancel' buttons.

Plane	Enable	Flood	Choke	Synonym
White	<input type="checkbox"/>	<input type="checkbox"/>	0	White
Cyan	<input checked="" type="checkbox"/>	<input type="checkbox"/>	0	
Magenta	<input checked="" type="checkbox"/>	<input type="checkbox"/>	0	
Yellow	<input checked="" type="checkbox"/>	<input type="checkbox"/>	0	

2) Under **Printer Options** – Set Media Type to **Cardstock** and Media Weight to **Ultra Heavy 4**



3) Per step number 1, double check the bottom right-hand corner of your screen to make sure the **mirror function is disabled**.



4) Install paper in the **multi-purpose tray** and **print**

For additional support, please contact support@coldesi.com or open a ticket at <https://support.coldesi.com/open-a-ticket/>.