



# TRANSFER INSTRUCTIONS

**Need More Paper?**  
Call Toll-Free 800-891-1094 or go to [colmanandcompany.com](http://colmanandcompany.com) to re-order.

## 8432 and 9541 Print Optimizer settings:

1) Under **Layer Profile** – Remove the checkmark next to **“White”** to turn white toner off and check **“no mirror”**.

**Please note** – if you are working under a queue that is programmed to mirror designs when importing, this radio button will NOT override it, it will need to be unchecked on the main screen (see below).

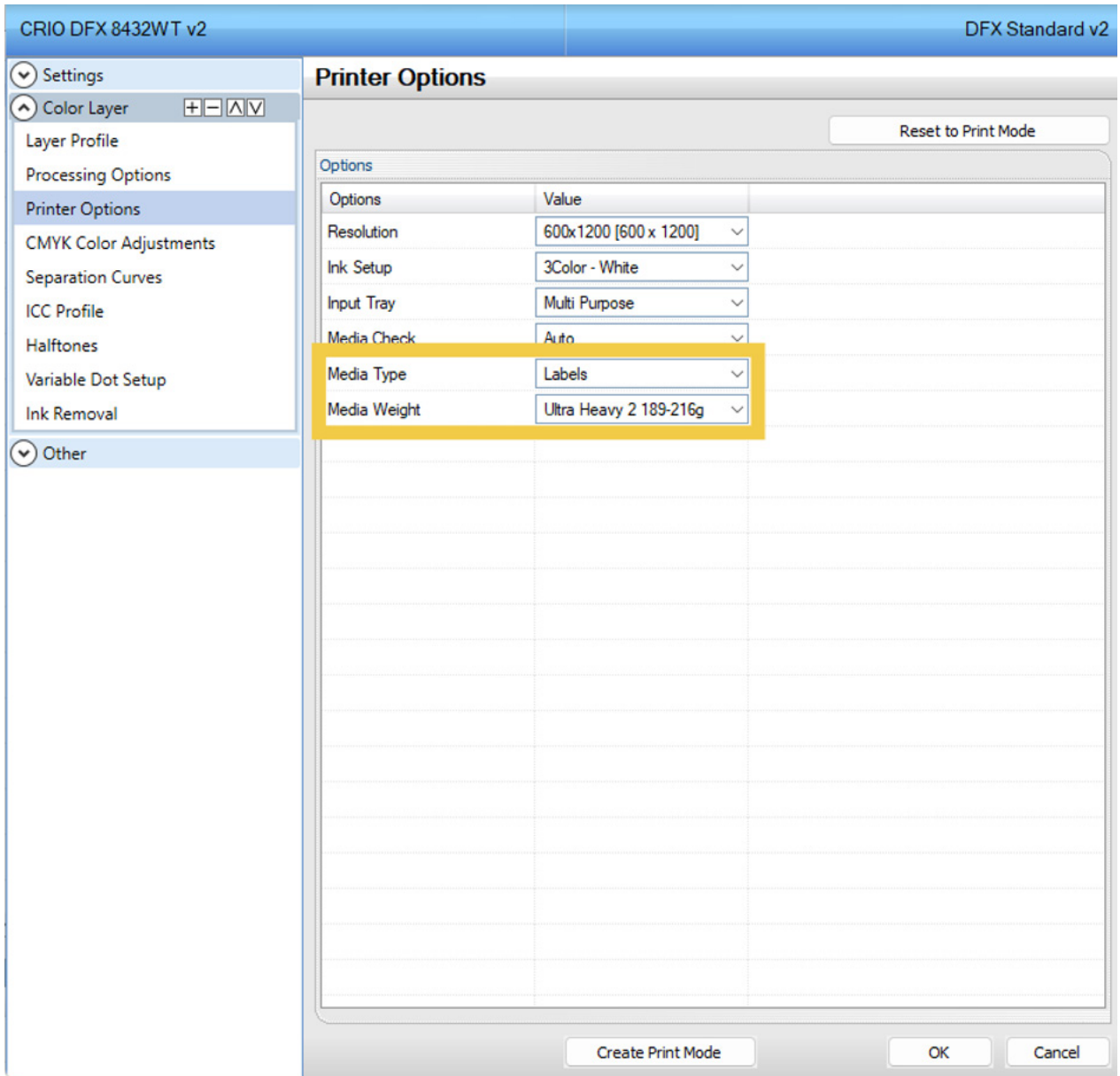
The screenshot shows the 'Layer Profile' settings window. On the left is a navigation pane with 'Settings' expanded to 'Color Layer', and 'Layer Profile' selected. The main area is titled 'Layer Profile' and contains the following settings:

- A 'Color Layer' dropdown menu.
- A table with columns: Plane, Enable, Flood, Choke, and Synonym.
- Checkboxes for 'Exclude from preview' and 'Use multipage document as layers'.
- A 'Page 1' dropdown menu.
- 'Flood level' slider set to 255.
- 'Layer Passes' dropdown set to 1.
- 'Auto Pause time' set to 0 s.
- 'Scale X' and 'Scale Y' both set to 100.00.
- 'Prompt for pause' and 'Toggle Port' checkboxes are unchecked.
- 'Mirror' radio button is selected, with 'Mirror Horizontally' and 'Mirror Vertically' options unselected.

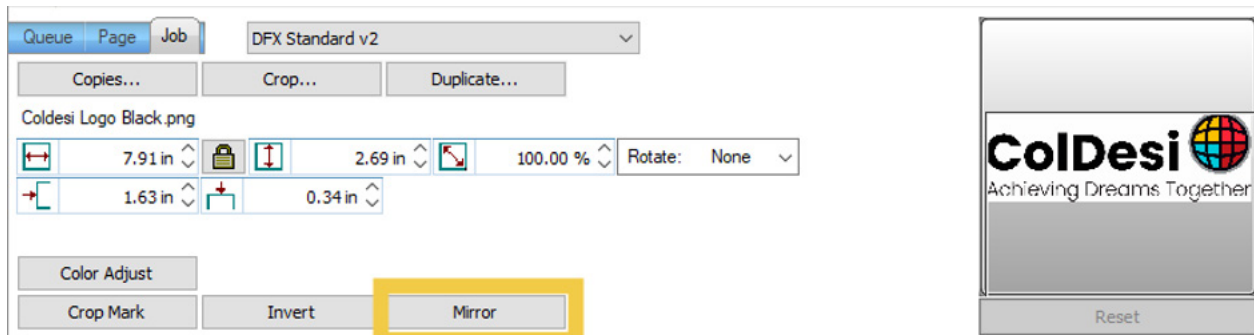
Plane	Enable	Flood	Choke	Synonym
White	<input type="checkbox"/>	<input type="checkbox"/>	0	White
Cyan	<input checked="" type="checkbox"/>	<input type="checkbox"/>	0	
Magenta	<input checked="" type="checkbox"/>	<input type="checkbox"/>	0	
Yellow	<input checked="" type="checkbox"/>	<input type="checkbox"/>	0	

Buttons at the bottom: 'Create Print Mode', 'OK', and 'Cancel'.

2) Under **Printer Options** - Set Media Type to **Labels** and Media Weight to **Ultra Heavy 2**



3) Per step number 1, double check the bottom right-hand corner of your screen to make sure the **mirror function is disabled**.



4) Install paper in the **multi-purpose tray** and **print**

5) Use scissors or a vinyl cutter to trim to desired size and apply to the item you would like decorated.

For additional support, please contact [support@coldesi.com](mailto:support@coldesi.com) or open a ticket at <https://support.coldesi.com/open-a-ticket/>.